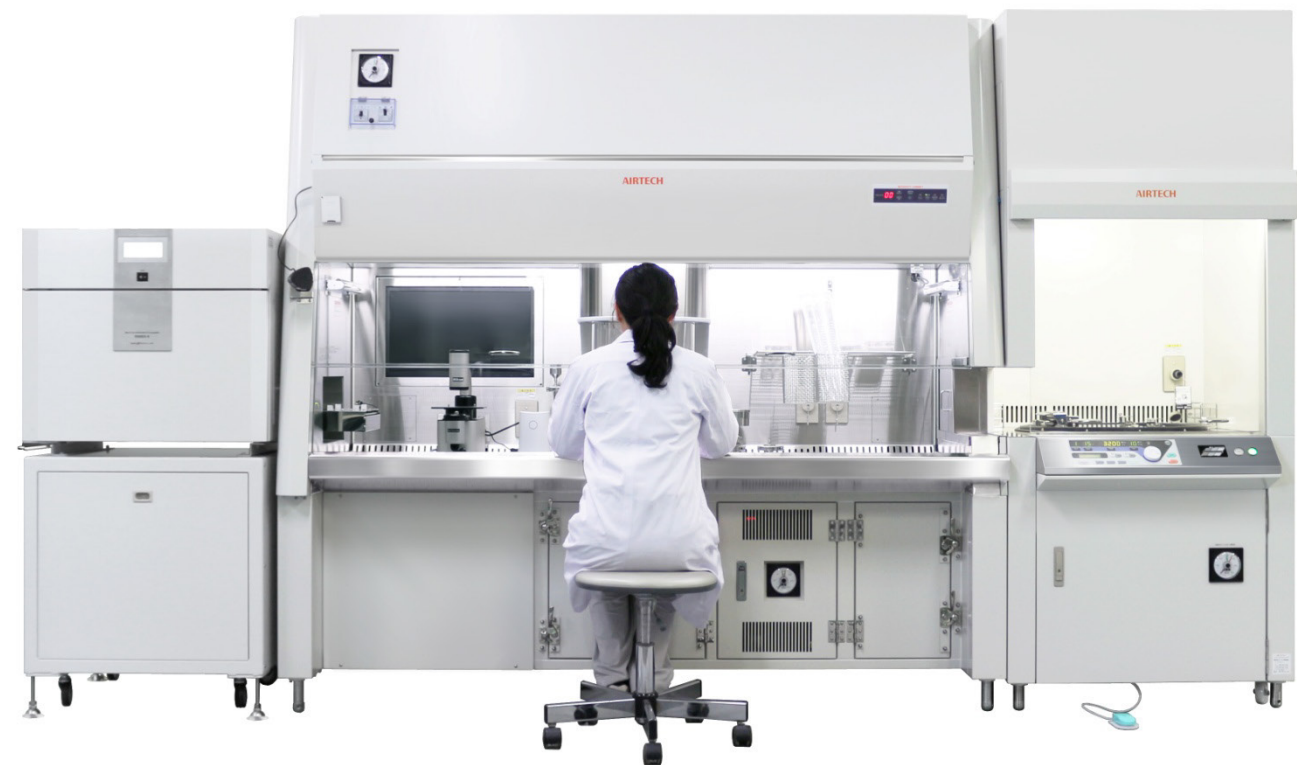


NEXT GENERATION CELL PLATFORM

The Concept Model Introduced



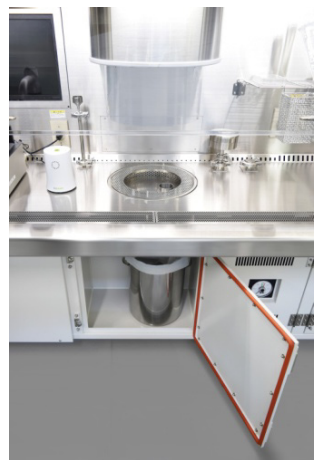
「NeXCell」 Welcome to the website
www.air-tech.com.tw/Nexcell/Nexcell_en.html



CULTURE CONTAINER
DELIVERY STAGE



MICROPARTICLE SAMPLING
PROBE



WASTE SHOOTER (AIS)



OPEN TYPE CLEAN DOOR

※This device is a conceptual model, and the appearance and size are subject to change without notice.



富泰空調科技股份有限公司
AIRTECH SYSTEM CO., LTD.

Email: info@air-tech.com.tw
TEL +886-3-610-5668 FAX +886-3-5972734
No.58-1, Guangfu Road, Hsinchu County 303-51,Taiwan

Develop by

日本エアーテック株式会社

ワケンビーテック株式会社

TOMY 株式会社 トミー精工

NEXT GENERATION CELL PLATFORM

The next-generation culture platform is mainly a three-company AIRTECH JAPAN, WAKENYAKU CO.,LTD., TOMY SEIKO CO., LTD., a concept model incorporating various ideas in anticipation of diversion to the production field. For the development of the regenerative medicine field, we will work on creating inexpensive and highly functional solutions with the all-Japan regime.

Cleanliness ISO 5

Each operation between the CO₂ incubator, the cabinet, and the centrifuge can be performed in a consistent ISO Class 5 cleanliness environment.



Operation Of Vessel Without Mistake

Connect automated incubator and cabinet. With automatic loading and unloading function, transport the containers to the cabinet without mistakes.

Reduce Shift Costs

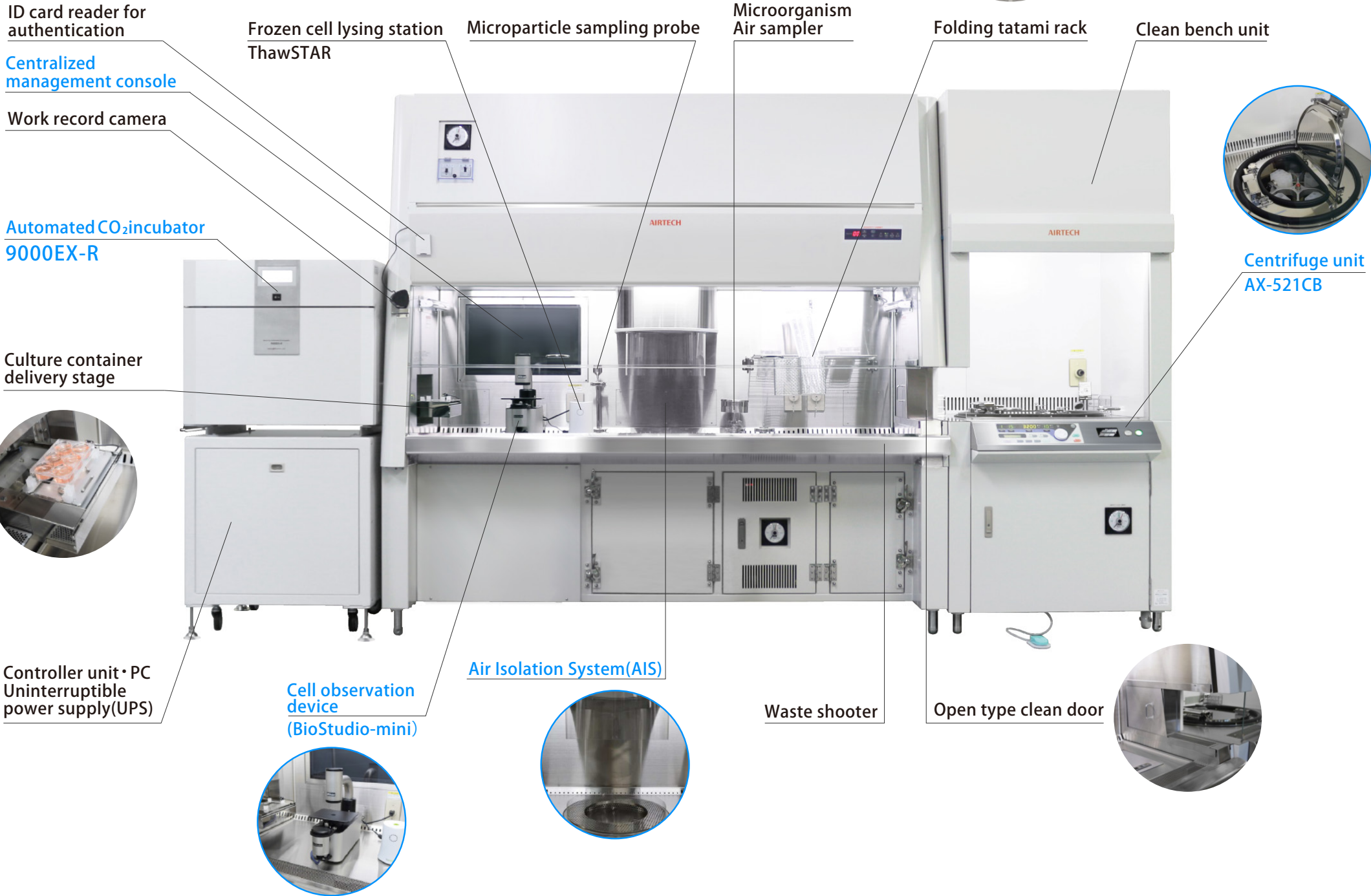
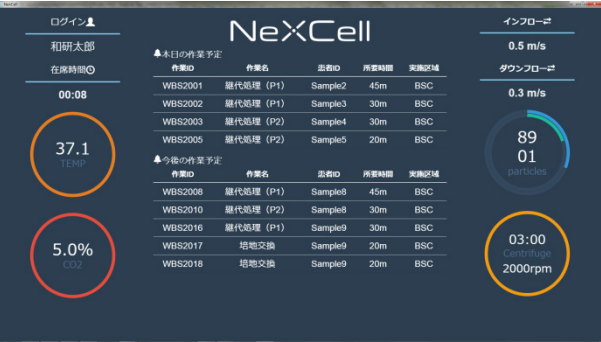
By adopting AIS (Air Isolation System), time and labor required for decontamination and cleaning at changeover can be dramatically reduced.

Promotion Of IOT By Centralized Console

Each control parameter of the NeXCell system is managed collectively on the console screen embedded in the AIS wall. You can record various data and check the status. It is also possible to link environmental data to work record and link to BMS / centralized monitoring system.

Cooperation With Process Management System

Work process with cell culture can be displayed on the console screen and work instruction and record according to the order can be done. embedded in the AIS wall. You can record various data and check the status. It is also possible to link environmental data to work record and link to BMS / centralized monitoring system.



* The Air Isolation System(AIS) is a registered trademark of AIRTECH JAPAN