

# AIRTECH

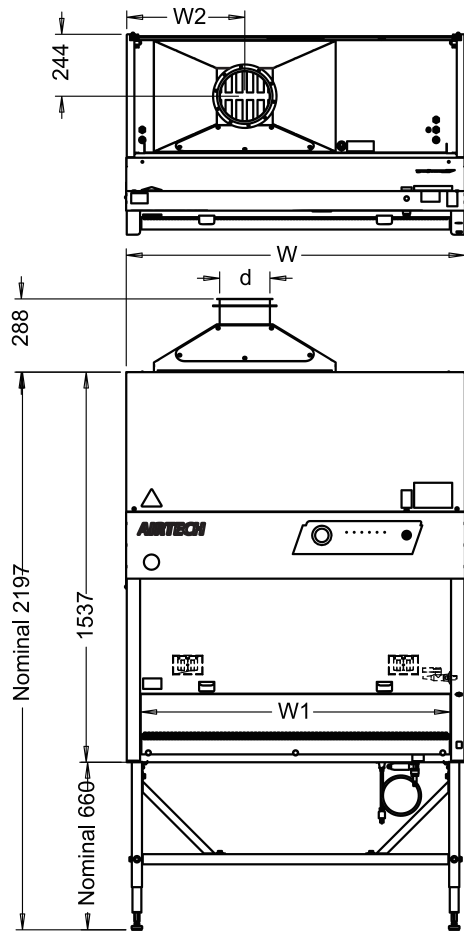


## Biological Safety Cabinets

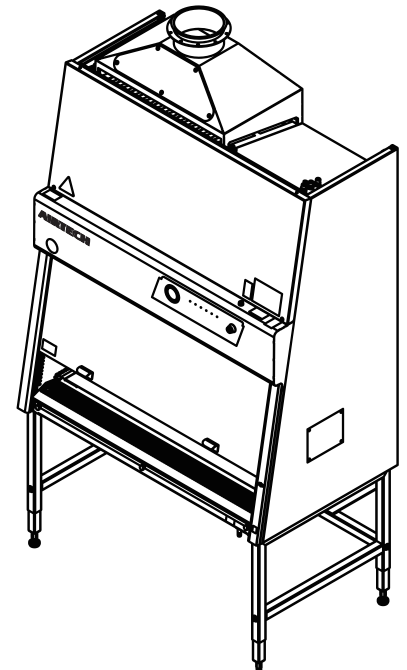
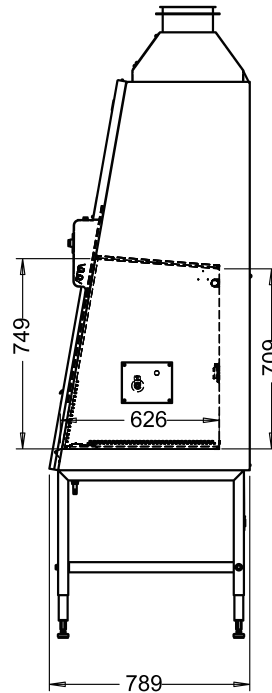
*The First-rate Protection for Operators, Products and Environment*



# Cabinet Dimension Drawings



	4 feet	5 feet	6 feet
W(mm)	1334	1634	1934
W1(mm)	1220	1520	1820
W2(mm)	465	572	700
d(mm)	200	250	250

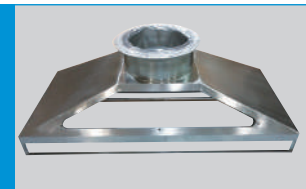


## Quality Components & Accessories



### IV Bar & Hanging Basket

The cabinet can be equipped with an SUS#304 Intravenous (IV) Bar and Basket to facilitate the hanging of required materials.



### Exhaust Canopy

SUS#304 Canopy provides air gaps on 4 sides to allow air to enter the ductwork and mix with the filtered exhaust air released into the atmosphere. It expands the use of Class II type A2 BSCs to work with small amounts of volatile chemicals and radionuclides adjunct to microbiological studies.



### Moveable Elbow / Arm Rest

The SUS#304 Moveable Elbow / Arm Rests (set of two) provide ergonomic forearm support, comfortable working posture and prevent grille blocking.



### Brake Casters

Available with a set (4) of 4" diameter, toe-locking polypropylene casters with bearings. Loading capacity for each caster is 140 kg. The casters can be directly installed on the telescoping support stand.

### Specification

Model	4 feet	5 feet	6 feet
<b>International Certification</b>	<ul style="list-style-type: none"> <li>• EN 12469</li> <li>• ISO 9001:2015</li> </ul>	<ul style="list-style-type: none"> <li>• EN 12469</li> <li>• ISO 9001:2015</li> </ul>	<ul style="list-style-type: none"> <li>• EN 12469</li> <li>• ISO 9001:2015</li> </ul>
<b>External Dimensions W×D×H (without support stand 660 mm)</b>	1334×789×1537 mm	1634×789×1537 mm	1934×789×1537 mm
<b>Internal Dimensions W×D×H</b>	1220×626×709 mm	1520×626×709 mm	1820×626×709 mm
<b>Cabinet Main Construction</b>	<ul style="list-style-type: none"> <li>• Working area: Stainless Steel#304 (Option: Viro-cut stainless steel, SUS#316)</li> <li>• External construction: Cold-rolled steel with powder coating finish</li> </ul>		
<b>Air Flow</b>	70% re-circulated / 30% exhausted		
<b>Window Operation Height</b>	20 cm		
<b>Avg. Inflow Velocity</b>	0.51 m/s		
<b>Avg. Downflow Velocity</b>	0.30 m/s	0.30 m/s	0.30 m/s
<b>Exhaust Air Volume with Exhaust Canopy</b>	11m <sup>3</sup> /min (20cm)	14m <sup>3</sup> /min (20cm)	17m <sup>3</sup> /min (20cm)
<b>Supply/Exhaust HEPA Filter</b>	99.99% @0.3 micron (Class H14)		
<b>Light Intensity</b>	> 1,000 lux		
<b>Sound Level</b>	< 57dBA (20cm)	< 59dBA (20cm)	< 61dBA (20cm)
<b>UV Lamp</b>	254 nm/ FL 30W×1	254 nm/ FL 40W×1	254 nm/ FL 20W×2
<b>Fluorescent Lamp</b>	T5/28W×2	T5/35W×2	T5/21W×4
<b>Window Glass</b>	6mm tempered glass		
<b>Electrical Outlets</b>	North America (UL Listed), Europe/Worldwide (CE Certified)		
<b>Optional Accessories</b>	<ul style="list-style-type: none"> <li>• IV bar with 6 hooks / hanging basket</li> <li>• Service valves(air, gas, vacuum) , CSA Certified</li> <li>• Exhaust canopy</li> <li>• Brake casters</li> <li>• Moveable elbow / arm rest</li> </ul>		
<b>Room Height Suggested</b>	227cm at least		
<b>Power</b>	115V / 15A		
<b>Consumption</b>	230V / 10A	230W (20cm)	380W (20cm)
	100V / 15A		430W (20cm)
<b>Net Weight</b>	240 kg	280 kg	320 kg
<b>Shipping Weight</b>	280 kg	320 kg	370 kg
<b>Shipping Dimensions W×D×H</b>	1400×850×1950±30mm	1700×850×1950±30mm	2000×850×1950±30mm

### Ordering Guide – Model Number

Cabinet Model	4 feet	5 feet	6 feet	Window Position
<b>Touch Screen / 115V,60Hz</b>	AHA-133-AA-A	AHA-163-AA-A	AHA-193-AA-A	20 cm
	AHA-133-AA-B	AHA-163-AA-B	AHA-193-AA-B	25 cm
<b>Touch Screen / 230V,50/60Hz</b>	AHA-133-AB-A	AHA-163-AB-A	AHA-193-AB-A	20 cm
	AHA-133-AB-B	AHA-163-AB-B	AHA-193-AB-B	25 cm
<b>Touch Screen / 100V, 50/60Hz</b>	AHA-133-AC-A	AHA-163-AC-A	AHA-193-AC-A	20 cm
	AHA-133-AC-B	AHA-163-AC-B	AHA-193-AC-B	25 cm
<b>Membrane Switch / 115V,60Hz</b>	AHA-133-CA-A	AHA-163-CA-A	AHA-193-CA-A	20 cm
	AHA-133-CA-B	AHA-163-CA-B	AHA-193-CA-B	25 cm
<b>Membrane Switch / 230V,50/60Hz</b>	AHA-133-CB-A	AHA-163-CB-A	AHA-193-CB-A	20 cm
	AHA-133-CB-B	AHA-163-CB-B	AHA-193-CB-B	25 cm
<b>Membrane Switch / 100V, 50/60Hz</b>	AHA-133-CC-A	AHA-163-CC-A	AHA-193-CC-A	20 cm
	AHA-133-CC-B	AHA-163-CC-B	AHA-193-CC-B	25 cm



# AIRTECH SYSTEM CO., LTD.

## Head Office / Factory I

NO.58-1, GUANGFU ROAD, HSINCHU INDUSTRIAL PARK.  
HSINCHU COUNTY 303-51, TAIWAN  
[TEL]+886-3-6105668 [FAX]+886-35972734

## Factory II

NO.84, GUANGFU NORTH ROAD, HSINCHU INDUSTRIAL PARK.  
HSINCHU COUNTY 303-51, TAIWAN

## Business Contents

Design, manufacture and sales of total cleanroom equipment, Air Shower, Air Curtain, Clean Booth, Clean Bench, Cleaning Unit, Biosafety Cabinet, Fan Filter Unit, Fume Hood, Hand Washer Dryer, H<sub>2</sub>O<sub>2</sub> Generator, Isolator, Pass Box, RABS, TCC, Biohazard System, etc.