

# AIRTECH

## SPECIMEN COLLECTION BOOTH

Simple setting with the purpose of preventing pathological contamination during check-up.

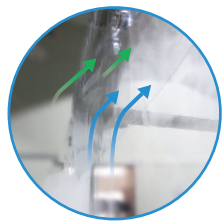
ACP-F2097

### 1 Features

- The specimen collection booth includes two Clean partition (one on each side) to help separate both the positive and negative pressure area. This separation is fundamental to isolate the risk of infection when medical practitioners collect samples.
- The specimen collection unit can be equipped with latex gloves, transparent vinyl, acrylic plates, etc. according to the customers' needs.

### 2 Examining the air flow direction

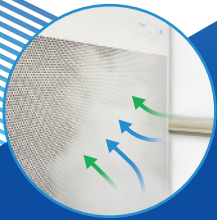
- Use of a Clean viewer to examine the air flow pattern inside the booth as shown in the following figure.
- The clean partition (right side) absorbs air from the outside (2) and releases it through the front laminar flow of the HEPA filter. The sampling area maintains a positive pressure; therefore, preventing external pollutants from invading the internal area (1).
- The airflow below is pushed by negative pressure so that the pollutants do not flow back (3) in, thereby ensuring the safety of the medical corps.
- The Clean partition (on the left, this time) absorbs the contaminated air and filters it through the HEPA filter (4). Clean air is exhausted and the sampling area maintains the negative pressure. Thus, there is no risk for the internal pollutants to overflow to the exterior (5).



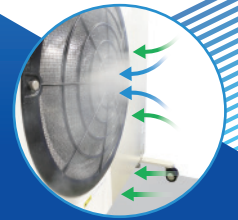
5 Constant movement of the airflow in the booth to maintain the negative pressure.



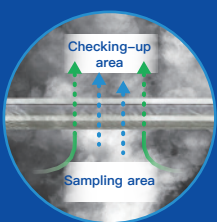
1 External air flow is squeezed out to maintain the positive pressure.



4 Internal air filtration using HEPA filter.



2 External air filtration using HEPA filter.



3 Inability of polluted air to circulate (Safe sampling area).



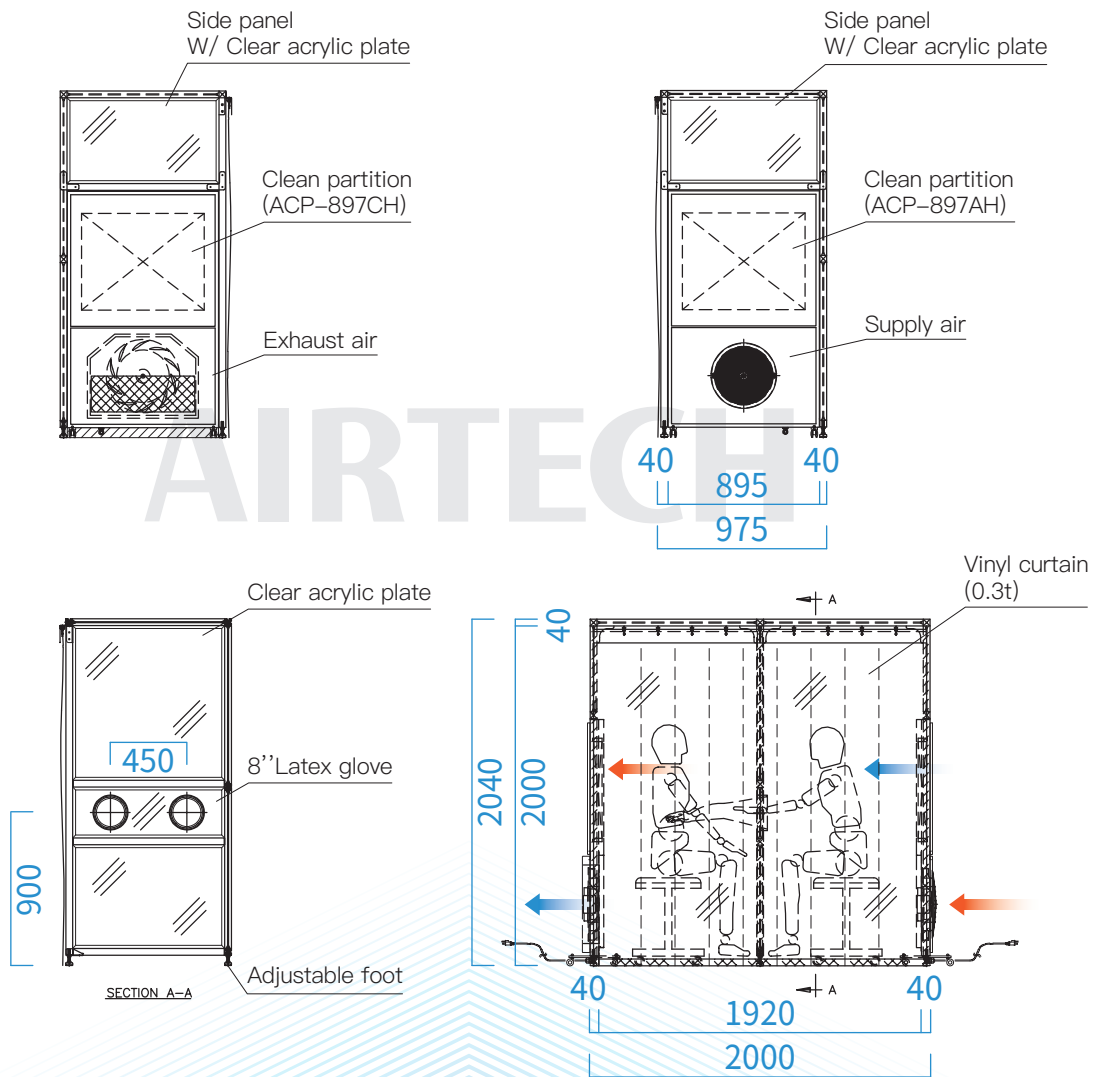
**Pictogram**

- ← Fog flow direction
- Air flow direction
- ⏪ Clean/Polluted air

Specimen collection booth

Clean partition (ACP-897AH)

## Drawing



## Specification

Models	ACP-F2097
Particle efficiency	Above 99.99% Efficient On 0.3 $\mu$ m Particles
Air volume (CMM/SET)	6.5 (Hi speed)
Dust collection elements	Main filter : HEPA filter Pre-filter : Nylon filter
Power	AC110V 1 $\Phi$ 50/60Hz
Power consumption	100 W/SET x2 SET 150 VA/SET x2 SET
Color	Ivory/Pearl white
Construction	Cold-rolled steel with bake painting Aluminum extrusion 40x40