

## All new Air Shower Energy saving DC blower from Japan is adopted

Superb air shower efficiency with good energy saving and ultra-clean air.

The air is through the HEPA filters which are 99.99% efficient against the particles of 0.3 microns.

Blow off the surface particles thoroughly at the speed of 23 m/s.

**Cold rolled steel with baked painting**

SUS 304 is optional.

**Mirror**

Enables personnel to check if they are dressed properly.

**Interlock mode**

The magnetic interlock mode helps minimize any chances of contamination.

**Fully washable pre-filters**

Around 85% of the particulate matters can be removed primarily. The pre-filters help reduce the load on HEPA so as to extend the life span and increase the efficiency.



**Graphical interface**

Easy for operation. Time setting is also supported.

**Indicator light**

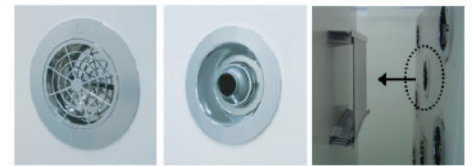
Operation status can be displayed promptly.

**Emergency stop switch (optional)**

The interlock function could be immediately removed by emergency stop switch.

**Stainless pulse nozzle (optional)**

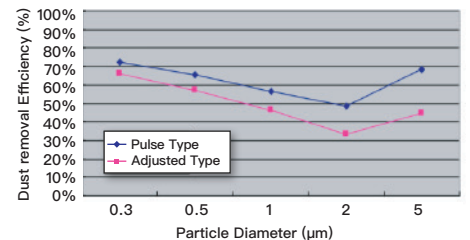
The nozzle direction can be adjusted to achieve 360° cleaning without a dead-end.



Pulse Nozzle

Adjusted Nozzle

Nozzle Effect Evaluation



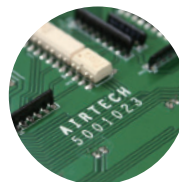
\* Better dust removal effect with pulse nozzle, which is confirmed by experiments from Japan.

### Features



#### High static pressure DC blower

It features with compact, high static pressure, and low power consumption. Outstanding efficiency can be fulfilled with only single unit.



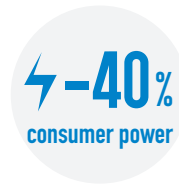
#### Intelligent control system

Intelligent single-chip program control mode that automatically enters the energy-saving mode under long-term standby, reducing energy consumption.



#### Integrated programming system service

It is programmed for easy modification and customization.



#### Reduced power consumption

Significant energy savings compared to a conventional AC motor.



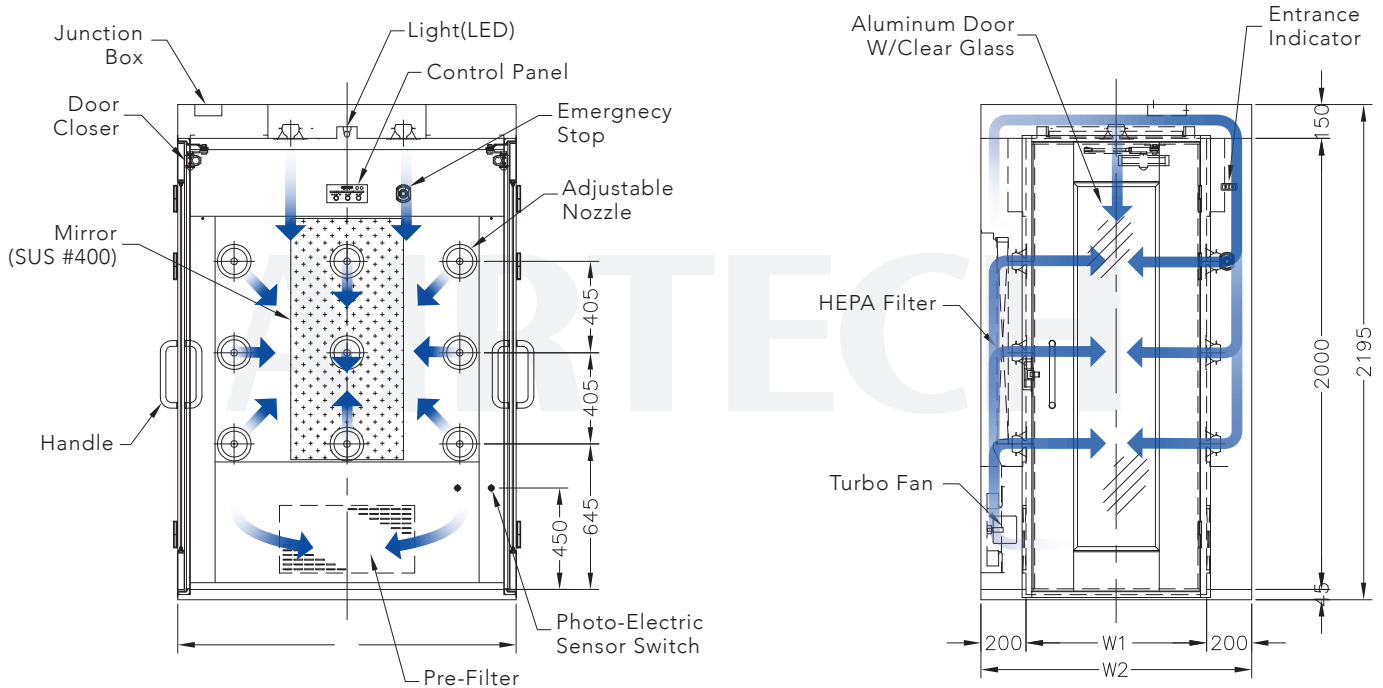
#### Mistake-proof design

Power-saving LED light; power indicator; graphical display makes it easier for understanding.



#### Recheck your garment

Tidy up cleanroom overalls by using the two-sided mirrors while entering the air shower.



Note: Above AAS-0810EARC-1.5 AIR SHOWER is standard type; specific unit could be tailored to the needs of customer.

Specification

<b>Particle Efficiency</b> HEPA 0.3μm 99.99% ULPA 0.1μm 99.999%(option)		<b>Air Velocity</b> 23M/Sec	
<b>Painting Color</b> Ivory white Pearl white(option)	<b>Noise</b> 65dBA	<b>Nozzles Qty.</b> 20pc	

Detailed

Main Filter	HEPA Filter/ ULPA Filter(option)	Sensor	Photoelectric switch sensing mode
Pre-Filter	Non Woven Filter	Base	Stainless Steel SUS 304 MAT
Electrical Switches	Single-chip microcomputer control module panel	Noise	65dBA(outside 1.5m of the A/S)
Construction	Coldrolled Steel with Baked Painting Stainless steel 304(option)	Power	AC 220V 3Φ50/60Hz

Model	W1 (mm)	W2 (mm)	D (mm)	Cycle (times/hour)	Nozzles Qty.	Air Volume (CMM)	Power Consumption (VA)	Door Type	Weight (kg)	LED light (W)
AAS-0810EARC-1	800	1,200	1,000	658	18	17.5	820	Single	350	10x1
AAS-0810EARC-1.5	800	1,200	1,500	487	20	19.5	850		470	

ATS-20170629A