

PACKAGED TYPE CLEAN UNIT

大風量空氣濾淨機

Best equipment choice for **spacious areas** · **HEPA high efficiency filter** ·
Energy-saving **DC blower**



PAU-20DC

PAU-40DC

PAU-80DC



Lights indicate on the display panel

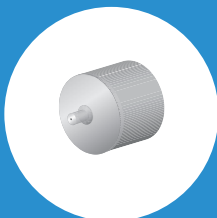
According to different status, the light signal changes the indication mode :

- Standard mode: constant light
- Fan problem: light flashing rapidly
- Life span of filter: Light flashing slowly



Adjustable guide plate

Adjust the airflow angle as it's required to deliver clean air into every corner.



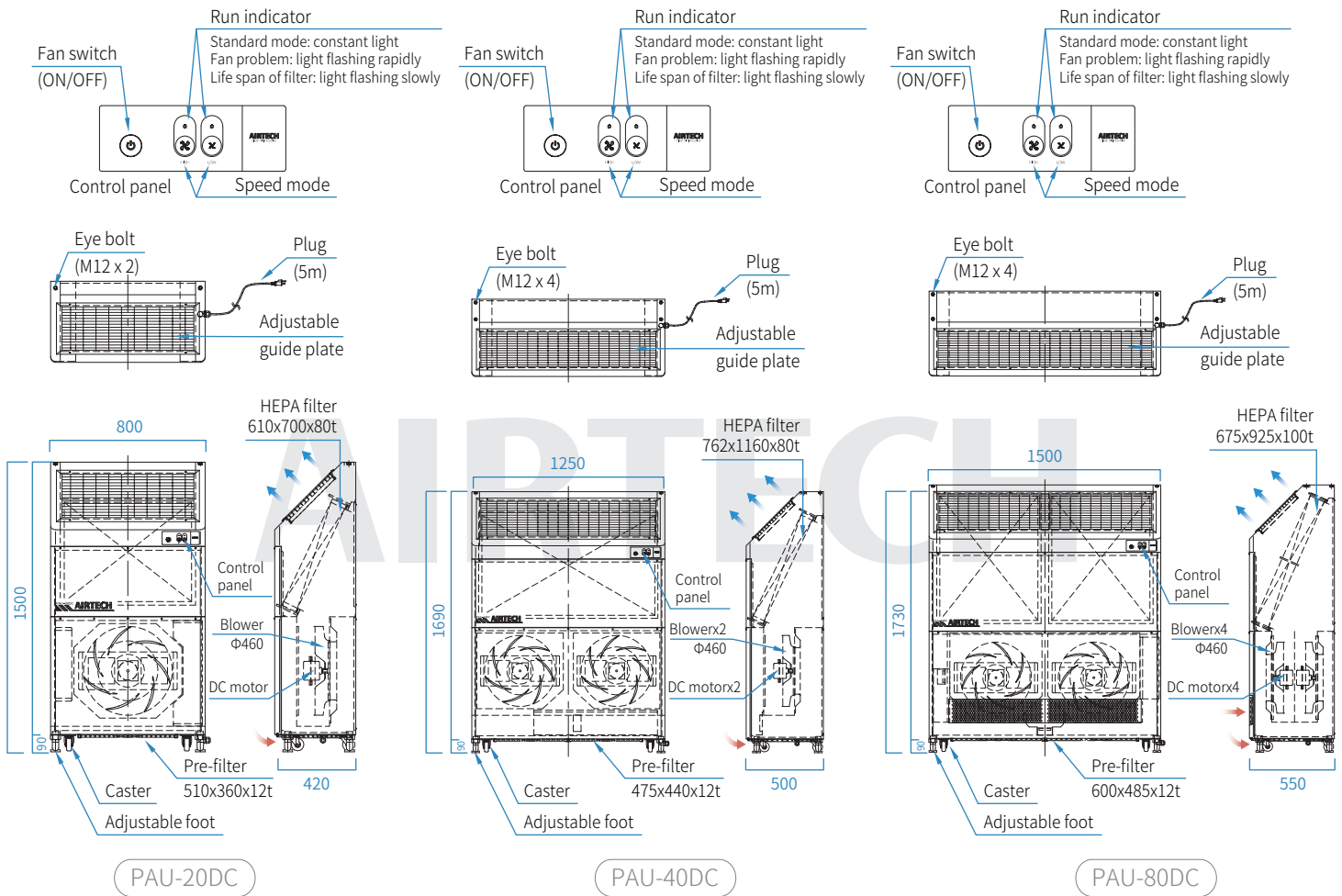
Energy-saving DC blower

Using high efficiency DC blower, low power consumption, high stability. It is the best choice for equipment system.



Extra large air outlet design

Best equipment choice for spacious areas, improve the air quality rapidly. Suitable for offices, stores, clinics and other commercial areas.



Specification

| Model | PAU-20DC | PAU-40DC | PAU-80DC |
|--------------------------------|---|---|---|
| Particle Efficiency | HEPA : Above 99.97% Efficient On 0.3µm Particles | | |
| Main Filter | HEPA : 610x700x80t x 1pc | HEPA : 762x1160x80t x 1pc | HEPA : 675x925x100t x 2pc |
| Pre-Filter | Non-Woven Filter : 510x360x12t x 1pc White Aluminum Frame | Non-Woven Filter : 475x440x12t x 2pc White Aluminum Frame | Non-Woven Filter : 600x485x12t x 2pc White Aluminum Frame |
| Air Volume (CMM) | Hi Speed : About 20 Lo Speed : About 10 | Hi Speed : About 40 Lo Speed : About 20 | Hi Speed : About 75 Lo Speed : About 60 |
| Construction | Cold-rolled Steel with bake painting | | |
| Color | Pearl White | | |
| Electrical | AC 100V 1Φ 50/60Hz | | |
| Blowers | Turbo Blower, 120W x 1 DC-Motor | Turbo Blower, 120W x 2 DC-Motor | Turbo Blower, 120W x 4 DC-Motor |
| Power Construction (VA) | Hi Speed : About 135W Lo Speed : About 45W | Hi Speed : About 300W Lo Speed : About 80W | Hi Speed : About 710W Lo Speed : About 510W |

Note: The product specifications change without notice.

