

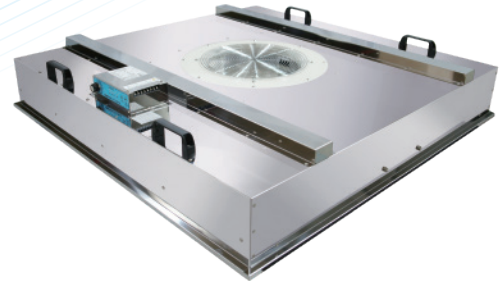
# FAN FILTER UNIT

## *DC high-efficiency energy-saving motor*

The fan filter device is a device that provides clean air in a clean room. To meet the requirements of different cleanliness levels, different specifications can be provided depending on the site space. This series is equipped with a DC high-efficiency energy-saving motor, which greatly improves operating efficiency. With communication software to monitor the equipment status at any time, in order to break through the installation space limitation, provide ultra-thin MD series for customers' reference.



FFU-TD18E



FFU-TD35E



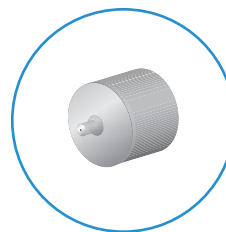
Ultra thin

FFU-MD18E



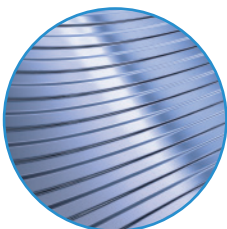
### **1** High performance, ultra-quiet

Special air-port design can reduce pressure loss and reduce noise, high-quality fan and high-efficiency motor reduce energy consumption.



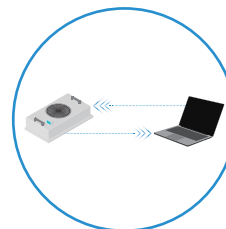
### **3** High performance motor

Equipped with a DC high-efficiency energy-saving motor.



### **2** Variety of material choices

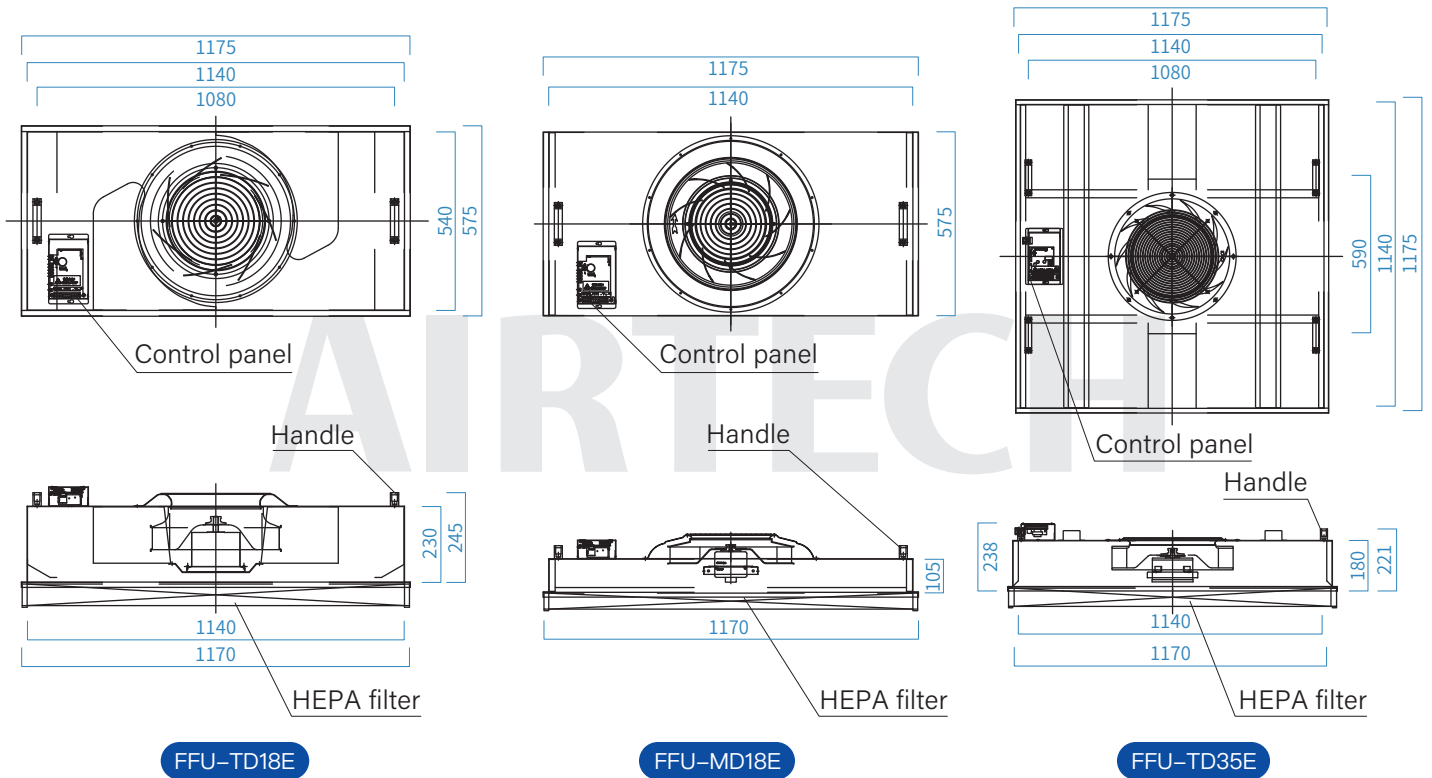
Possesses multiple selective main materials: steel plate baking varnish, stainless steel SUS430, aluminum-zinc plate.



### **4** Surveillance system

Equipped with a high-tech single-chip communication control box to meet the monitoring requirements of the entire field.

## Drawing



Note: The specifications of this product are standard models, and special specifications specified by customers are also custom-made.

## Specification

Model	FFU-TD18E	FFU-MD18E	FFU-TD35E
Main Structure	Steel plate baking varnish / Stainless steel SUS430 / Aluminum-zinc plate		
Box size(WxDxH)(mm)	575x1175x245	575x1175x120	1175x1175x221
Electrical	AC220V 1Φ 50/60Hz		
Operating speed	No speed adjustment / Fixed five speeds		
Consumption current(A)	0.72	1.0	2.1
Power Consumption(VA)	160	220	480
Air Velocity(m/s)	The maximum can reach 0.50	The maximum can reach 0.50	The maximum can reach 0.45
Air Volume(CMM)	The maximum can reach 18	The maximum can reach 18	The maximum can reach 35
Communication format	Modbus RTU		
Optional	Central Monitoring System		